

Histoplasmosis and asplenia

A 42-year-old asplenic woman was evaluated for a 2-week history of intermittent high-grade fevers and pleuritic chest pain and skin rash (figure 1). A CT scan of the chest showed multiple small nodules on both lungs (figure 2). Fungal serological studies were negative. A skin biopsy revealed palisading dermal granulomatous inflammation with focal vascular destruction and was negative for any organisms (figure 3). Bronchoalveolar lavage did not yield positive results for any organism. Open lung biopsy showed necrotising granulomatous inflammation and *Histoplasma capsulatum* (figure 4). She was treated with itraconazole for 6 months. Her skin rash disappeared in 2 weeks and complete radiological resolution of the lung nodules occurred after 3 months of treatment.

Asplenic patients are prone to histoplasmosis.¹ Skin rash is associated with pulmonary histoplasmosis. Patients living in endemic areas for histoplasmosis who undergo splenectomy should be encouraged to wear a mask to prevent exposure to *Histoplasma* while working with soil.



Figure 1 Maculopapular skin rash involving the trunk and upper extremities.

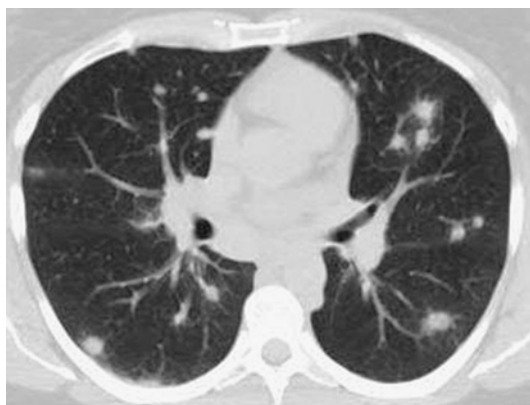


Figure 2 A CT scan showing multiple pulmonary nodules with mediastinal adenopathy.

Harris V K Naina,¹ Charles F Thomas Jr,^{1,2} Samar Harris³

¹Department of Internal Medicine, Division of Hematology, Mayo Clinic College of Medicine, Rochester, Minnesota, USA; ²Division of Pulmonary and Critical Care Medicine, Department of Internal Medicine, Mayo Clinic College of Medicine, Rochester, Minnesota, USA; ³Department of Internal Medicine, University of Missouri, Columbia, Missouri, USA

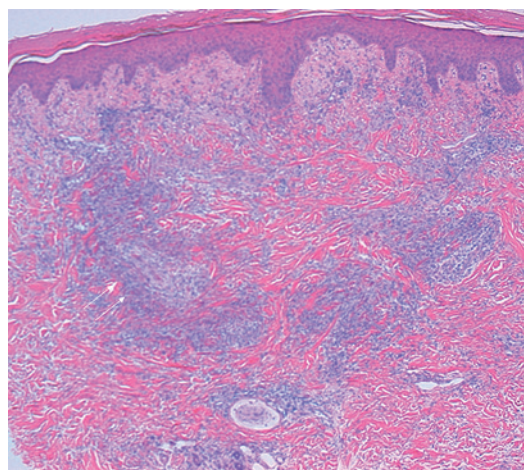


Figure 3 A skin biopsy showing palisading dermal granulomatous inflammation with focal vascular destruction.

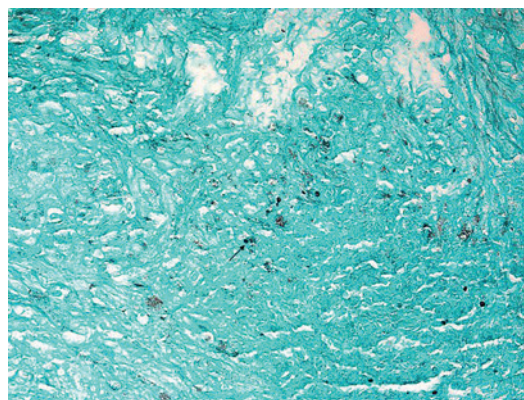


Figure 4 A lung biopsy showing *histoplasma capsulatum* on GMS stain, small, round (arrow) and narrow-necked budding organisms.

Learning points

- ▶ Histoplasmosis is anecdotally reported in asplenic patient.
- ▶ Skin lesions are usually reported in immunosuppressed patients, especially in patients with HIV.
- ▶ Histoplasmosis should be added to the list of potential pathogens that can cause disease in the asplenic patient.

Correspondence to Dr Harris V K Naina, Department of Internal Medicine, Division of Hematology Mayo Clinic College of Medicine, Rochester, Minnesota 55905, USA; naina.harris@mayo.edu

Competing interests None.

Patient consent Obtained.

Provenance and peer review Not commissioned; externally peer reviewed.

Accepted 22 May 2009

Thorax 2010;**65**:372. doi:10.1136/thx.2008.100214

REFERENCE

1. Rose FB, Camp CJ, Chisdak M. Disseminated histoplasmosis and asplenia. *Ann Intern Med* 1982;**96**:790.



Histoplasmosis and asplenia

Harris V K Naina, Charles F Thomas, Jr and Samar Harris

Thorax 2010 65: 372

doi: 10.1136/thx.2008.100214

Updated information and services can be found at:

<http://thorax.bmj.com/content/65/4/372.full.html>

These include:

References

This article cites 1 articles, 1 of which can be accessed free at:

<http://thorax.bmj.com/content/65/4/372.full.html#ref-list-1>

**Email alerting
service**

Receive free email alerts when new articles cite this article. Sign up in the box at the top right corner of the online article.

Notes

To request permissions go to:

<http://group.bmj.com/group/rights-licensing/permissions>

To order reprints go to:

<http://journals.bmj.com/cgi/reprintform>

To subscribe to BMJ go to:

<http://group.bmj.com/subscribe/>